

NEW FACILITIES AT ILLINOIS YEARLY MEETING

McNabb, Illinois 2008-2009

This projects adds year-round retreat facilities to the existing 1875 historic meeting house and campground of the Illinois Yearly Meeting of the Religious Society of Friends (Quakers). The functions have been arranged into three new buildings: a Dining Hall (shown in green in drawing to right) with commercial kitchen, and two small Dormitories, one to be built now and another in the near future (options shown in purple).



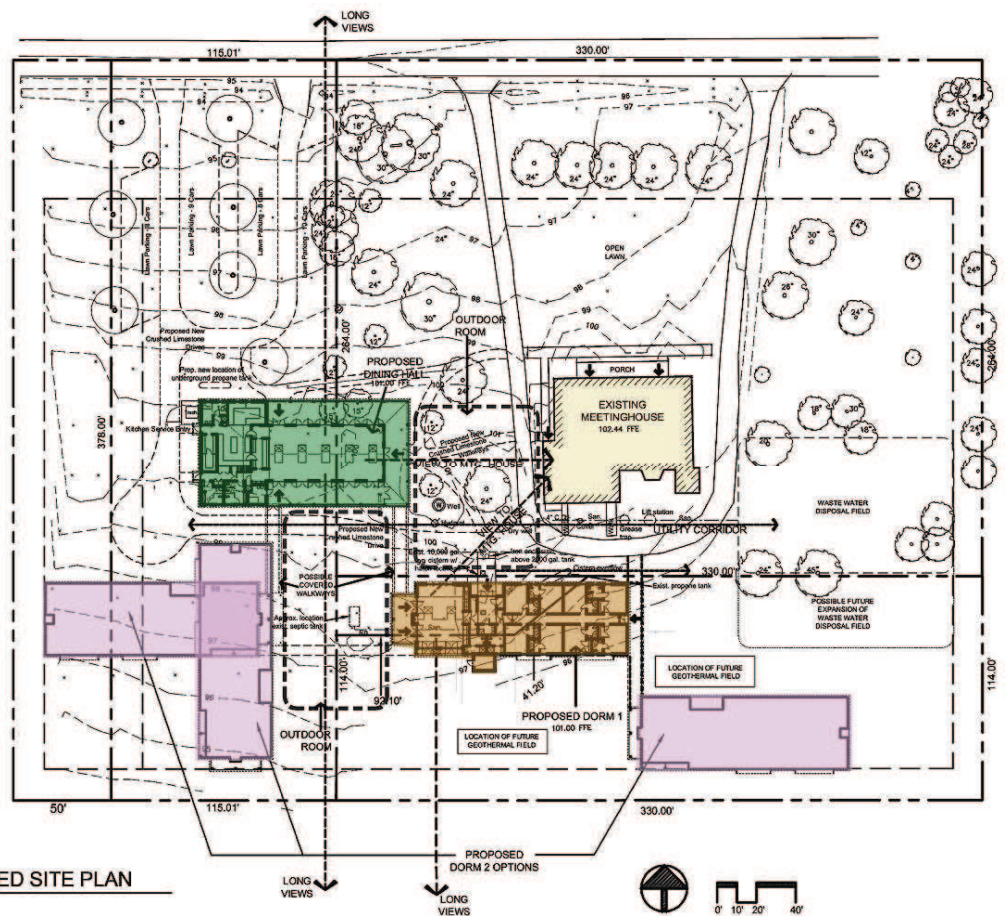
Historic Meeting House built in 1875

The first dormitory (shown in brown in drawing to right) is to include winter meeting space for the local Quakers of Clear Creek Monthly Meeting which started in 1834.

The new buildings are intended to be deferential to the existing meetinghouse (shown in tan in drawing to right) by being lower in profile and farther back on the site.

They are placed to create an orderly campus, to make outdoor rooms between buildings, and to maximize views of the meetinghouse and across the fields to the south and north.

A utility corridor for water, gas and sanitary lines links all of the buildings along with the well, gas tanks, cistern and septic field.

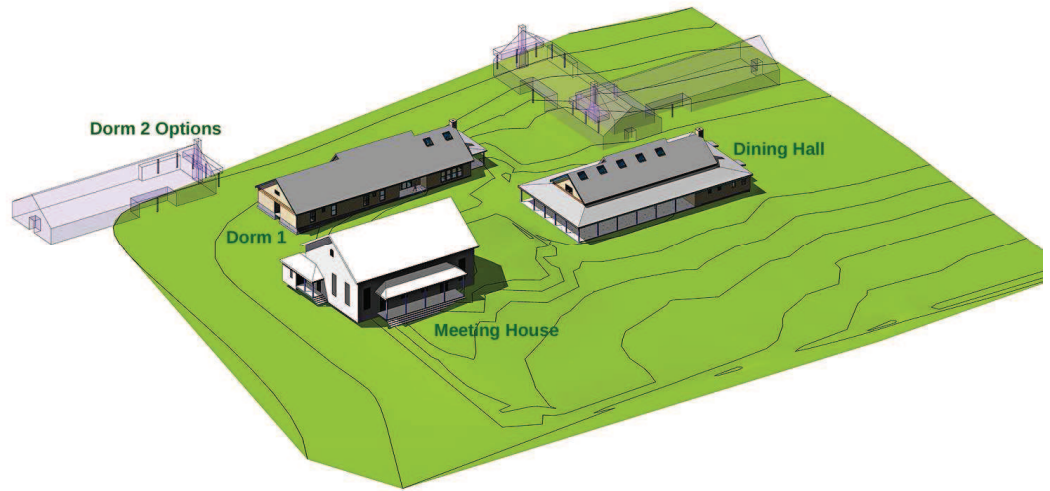


NEW FACILITIES AT ILLINOIS YEARLY MEETING

McNabb, Illinois 2008-2009

The buildings may be linked by covered walkways in the future and all of the facilities are to be made fully accessible to persons with disabilities.

A primary goal is to create a collection of spaces that are good to be in, places that are together in larger groups, places to promote smaller encounters, and places to be alone.



SITE MODEL: VIEW FROM NE



SITE MODEL: VIEW FROM NORTH

The exterior materials, colors, roof pitch and detailing match that of the meeting house. They are to be well built to last a long time with low maintenance and easy to clean materials.



**SITE MODEL:
VIEW TO EAST AT SOUTH PORCH: DINING HALL**

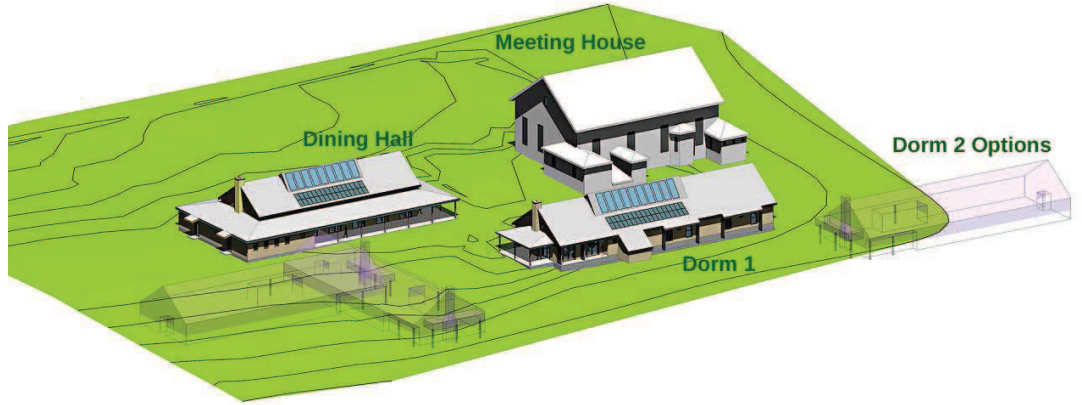
NEW FACILITIES AT ILLINOIS YEARLY MEETING

McNabb, Illinois 2008-2009

Sustainable design features of the buildings include a very tight, well insulated envelope, high quality windows, doors and skylights providing day lighting and ventilation. Ceiling fans and energy recovery ventilation system reduce the need for air-conditioning in the summer and reduce ventilation heat loss in the winter. Local and recycled materials will be used wherever feasible.

Roof rainwater will be collected in an existing cistern and used for toilets and the fire sprinkler system. The south facing roof slopes are at the correct angles for solar collection for both hot water panels and solar photovoltaic panels and light tubes are to be used to illuminate interior spaces.

Ground-source heat pump systems are planned for heating and air-conditioning the new buildings and the scale of the site will allow the use of fields instead of wells for transferring heat to and from the equipment. The concrete slab floors will also be fitted out with tubing for possible solar radiant heating if desired in the future. Domestic hot water is to be provided by solar panels. Photo voltaic panels and wind power to provide electricity will not be installed immediately but are expected to be added in the future and linked to the electric grid.



SITE MODEL: SW



SITE MODEL: VIEW FROM SW



SITE MODEL: VIEW FROM NORTH

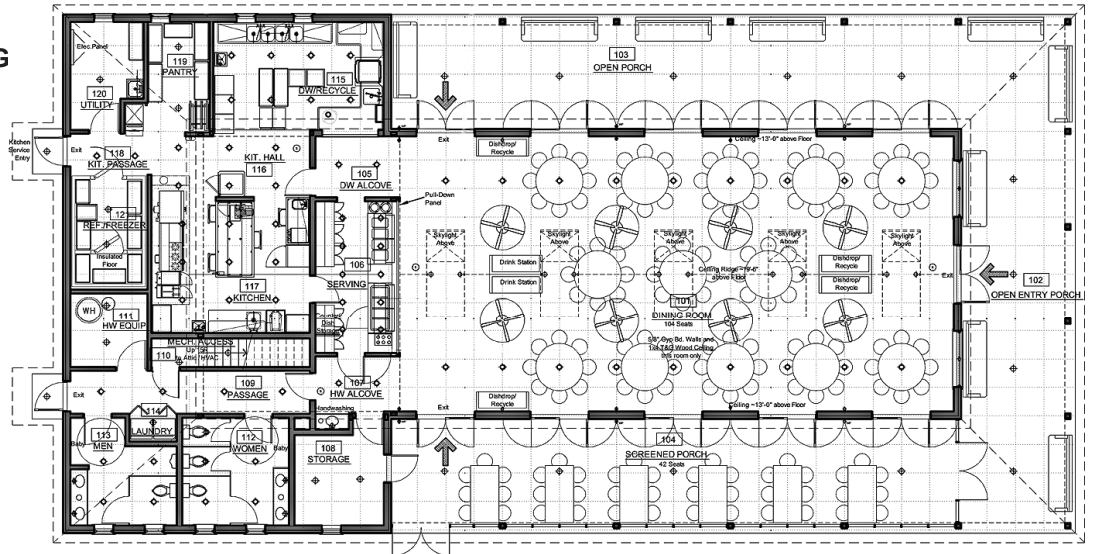
NEW FACILITIES AT ILLINOIS YEARLY MEETING

McNabb, Illinois 2008-2009

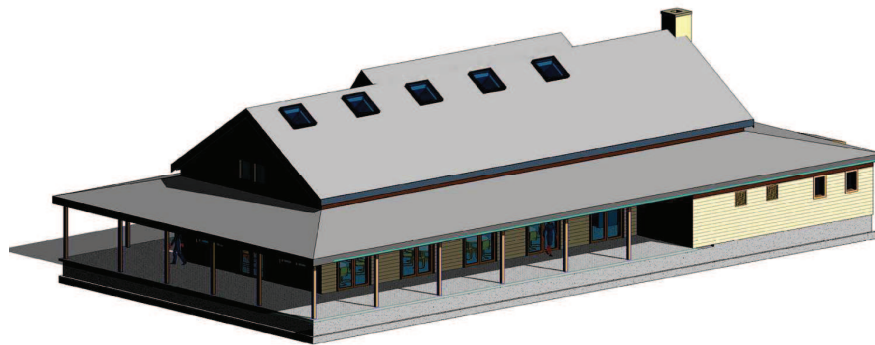
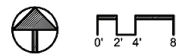
The dining hall has kitchen and service spaces on the west side and a dining room to the east nearly surrounded by porches on the other three sides.

The dining room opens to the porches and can seat 104. An additional 42 can be accommodated at the south screened porch.

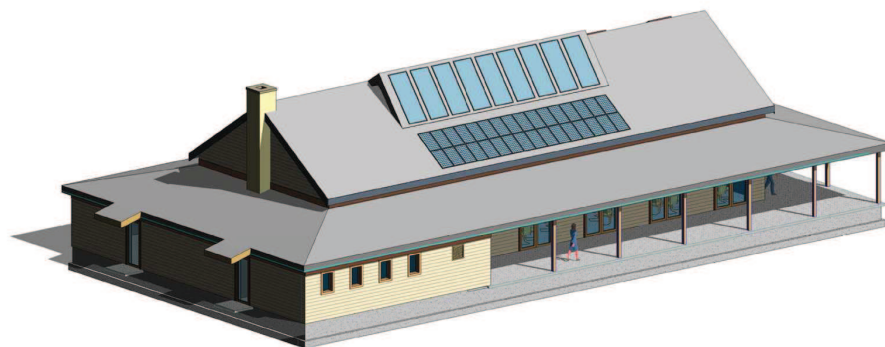
The kitchen is well outfitted for group meal preparation and has space for a recycling center. Hand-washing sinks, public restrooms and laundry equipment are also provided.



DINING HALL PLAN



DINING HALL MODEL: NE



DINING HALL MODEL: SW

**NEW FACILITIES AT
ILLINOIS YEARLY MEETING**

McNabb, Illinois 2008-2009



DINING HALL INTERIOR LOOKING EAST



DINING HALL INTERIOR LOOKING WEST

Architecture and Conservation P. C.

1008 S. Home Avenue, Oak Park, Illinois 60304
708-358-1020 fax 0155 email: info@archandcons.com
www.archandcons.com

President / Architect

Christopher Goode, ALA, LEED AP

© 2010 Architecture and Conservation P.C.

NEW FACILITIES AT ILLINOIS YEARLY MEETING

McNabb, Illinois 2008-2009

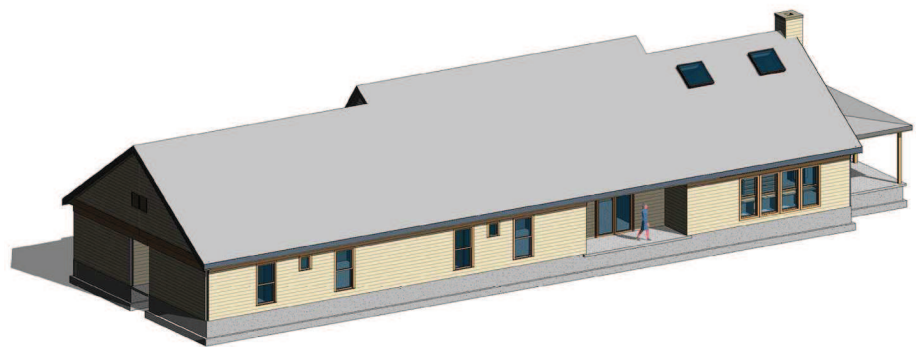
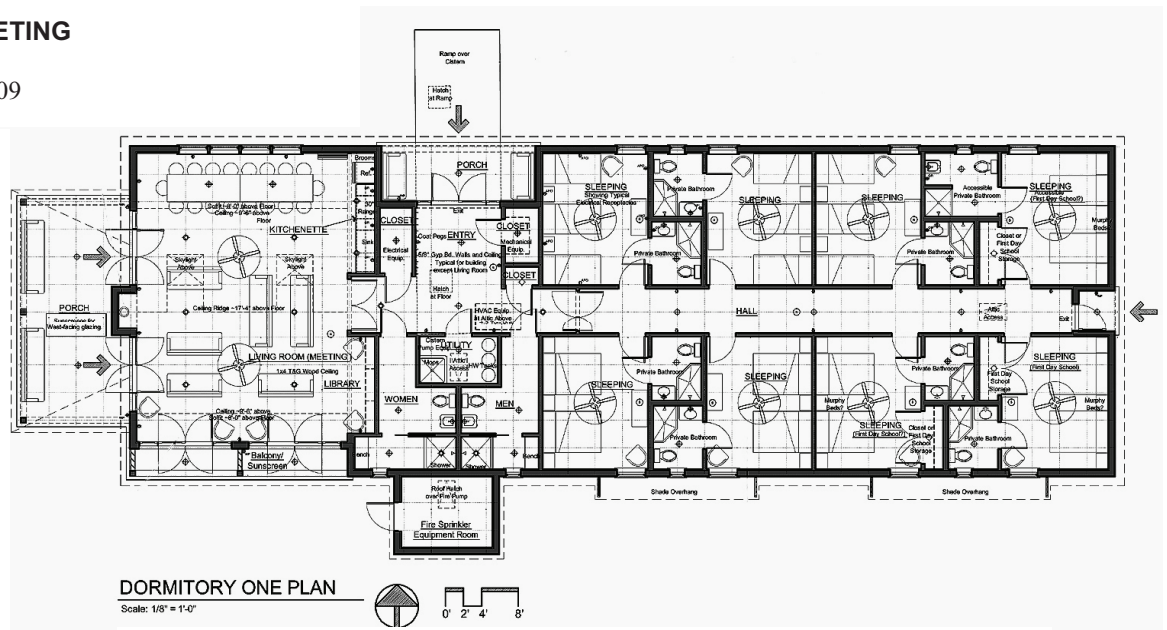
Dorm One contains eight sleeping rooms, each of which can accommodate two to six people and each with its own bathroom.

One of the rooms is fully accessible to the disabled, and two can be used as well for First Day School by Clear Creek Meeting.

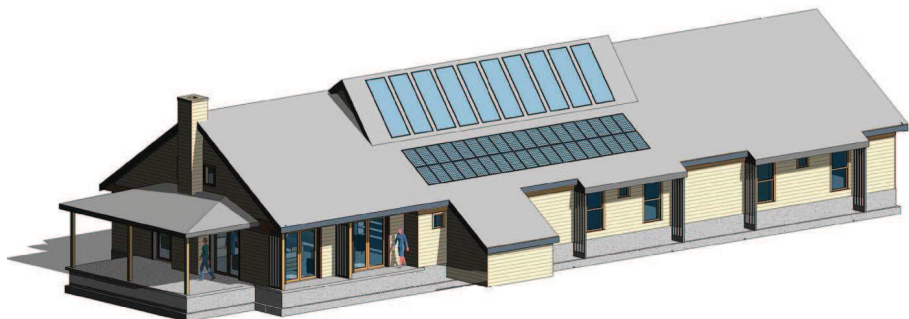
The Living/Meeting Room at the west end of the building, to be used as a gathering place for retreats and by Clear Creek Meeting, has a Library alcove and a Kitchenette suitable for limited meal preparation and pot lucks.

The building has an entry porch and a deep porch next to the Living Room providing shade from the west sun. A wood burning stove will be located along that wall providing heat as well as a focus to the room.

Windows along the south face are shaded to allow sun to warm the floors in winter and be blocked in summer.



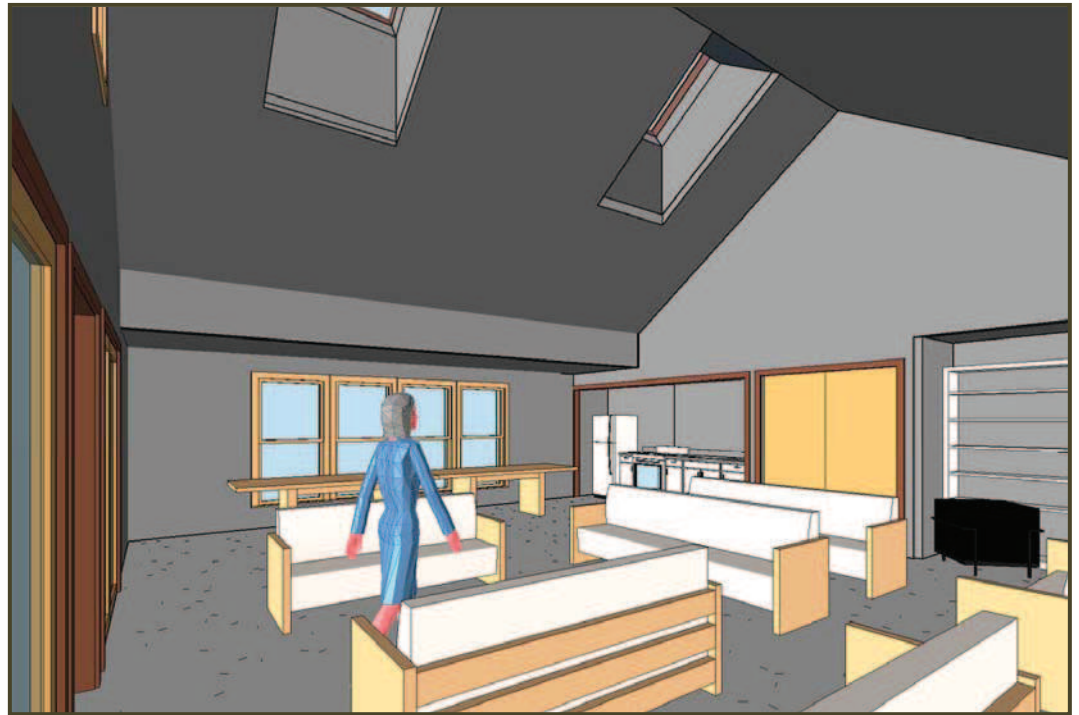
DORM MODEL: NE



DORM MODEL: SW

**NEW FACILITIES AT
ILLINOIS YEARLY MEETING**

McNabb, Illinois 2008-2009



DORMITORY INTERIOR LOOKING NE



DORMITORY INTERIOR LOOKING NW