

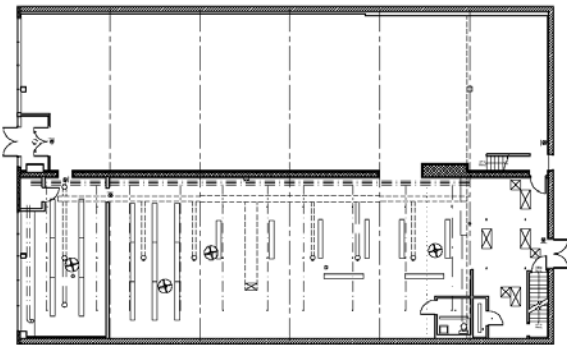
COMMERCIAL TENANT FIT OUT

LaGrange, Illinois 2007

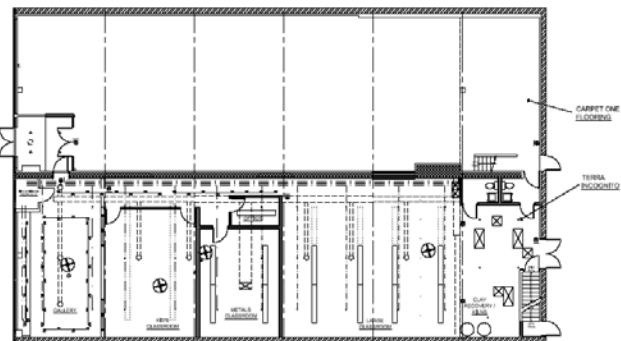
Converting the south portion of a retail showroom and warehouse created a ceramic art gallery space at the street side, with additional display areas extending along the hallway toward new rooms for ceramic and metals classes. Existing roof structure was used to configure partitions and spaces. New ductwork and lighting was installed throughout, along with new electrical service for clay firing kilns at the rear of the unit.



PREVIOUS SPACE AT WEST END



PREVIOUS PLAN



NEW PLAN



NEW SPACE AT WEST END



VIEW DOWN HALL FROM EAST